

Shot Peening





Shot blast systems, working in perfect harmony



Rösler shot blasting is synonymous with technological leadership in the field of mechanical surface treatment. Besides innovative products and services we offer our customers a comprehensive knowhow in surface treatment methods as well as the expertise for integrated manufacturing solutions.

With custom engineered technical solutions we bring a high degree of quality and cost efficiency to our customers, providing them with significant competitive advantages.

When it comes to the two most important surface treatment fields, namely mass finishing and shot blasting, Rösler is the only equipment supplier in the world who can offer both. You simply present your surface treatment problems to us, and we in turn will develop the economically and technically most suitable solution for you in our test and demonstration centres.



Rösler shot blasting machines generally distinguish themselves with many innovative technical details. Our company has successfully transformed decades of experience into modern equipment concepts. In both fields, mass finishing as well as shot blasting, we develop customer oriented solutions, which can be easily integrated into fully automatic manufacturing processes. Our shot blast surface finishing and surface preparation systems are generally characterised by their state-of-the-art technology and with the highest emphasis on cost efficiency.

If special importance are our heavy duty blast turbines, which offer significant increases in productivity with, at the same time, reduced operating costs.

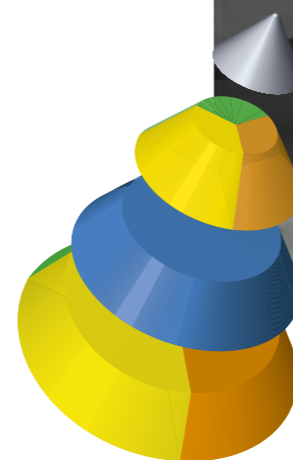
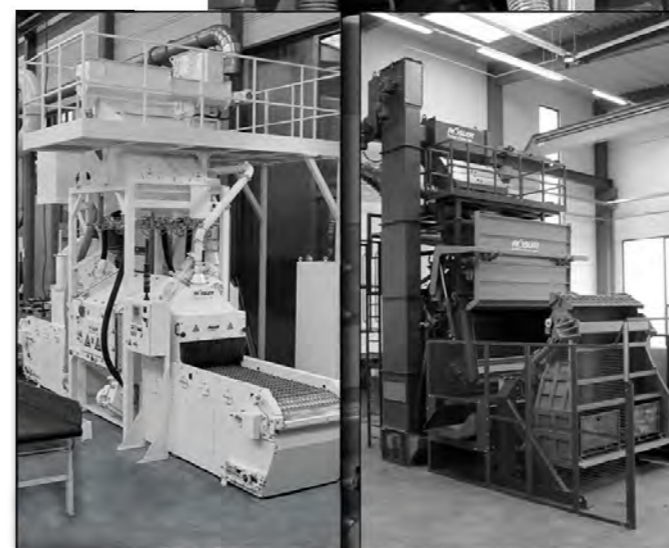
As the only single source manufacturer and supplier of mass finishing and shot blasting systems we are the global market leader for equipment and process technology in the field of surface treatment (deburring, descaling, polishing, grinding, etc.) of component parts made from various metals, plastics and other materials.



Our customers can be found in a wide variety of industries. They all rely on the fact that Rösler offers them by far the best surface treatment solutions in the market. "Innovation is our strength" is not just a slogan. We quickly react to the constantly changing technological market environment with up-to-date processing solutions. At the same time, we are constantly searching for new fields of applications for our technologies and, by doing so, we are able to develop innovative surface treatment processes combining a consistently high quality surface finish at the lowest possible costs.



DIN EN ISO 9001 and 50001



Global network of test labs

Test labs for mass finishing and shot blasting at the Rösler headquarters in Untermerzbach:

- ▶ More than 95 mass finishing and shot blast machines.
- ▶ About 2,700 m² (27,000 sqft) workspace

Our teams in USA, Great Britain, France, Netherlands, Belgium, Spain, Turkey, Romania, Italy, Austria, Switzerland, Russia, Brazil, Serbia and India provide similar test lab services.

Complete solutions

Besides demanding high quality, environmentally safe and efficient products, our customers also prefer to purchase all process components from one single source. That is why we offer not merely the processing equipment but the complete package with perfectly matched consumables. This guarantees the best finishing results and absolute process safety. Our global service teams take care of the delivery and the installation for you. Qualified engineers train our customers right at their location. And, of course, our after-sales service members will answer all of your questions. Quick supply of all spare parts and professional consultation by our experienced process specialists ensure that your finishing processes are always running smoothly.

Rösler Academy

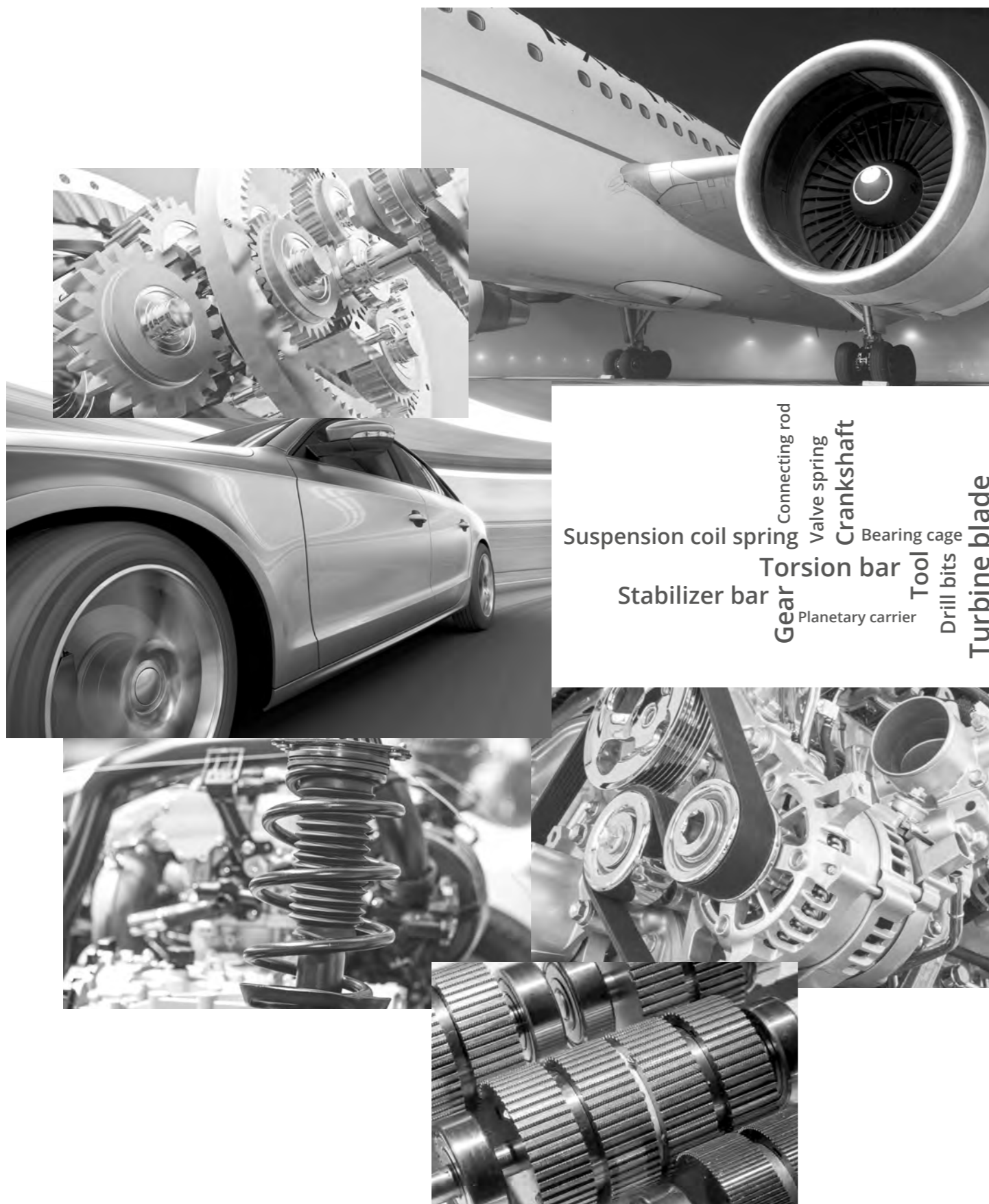
Knowledge transfer in the fields of mass finishing and shot blasting from a single source

As the only supplier in the world that offers both mass finishing and shot blasting, we are committed to passing our knowledge and knowhow to our customers through seminars covering a wide range of surface finishing subjects. Gain in depth knowledge of how mass finishing works, how blast media passes through a shot blast machine, and how you can increase your efficiency and productivity with optimum control and testing methods for cleaning and recycling your process water. You can find a complete list of our training seminars for mass finishing and shot blasting using the following link: www.rosler-academy.com.






Fields of application / Examples of applications



Overview

	Swing table blast machine	6 - 7		Multi-Tumbler	16 - 17
	Rotary table blast machine	8 - 9		Auxiliary equipment	18 - 19
	Satellite table blast machine	10 - 11		Rösler technical support (overview)	20 - 21
	Swing chamber blast machine	12		RetroFit	22
	Continuous feed rotational peening machine	13		After-Sales-Service	23
	Tumble belt blast machine	14 - 15			



If your mobile phone is equipped with a QR-code detection software, you can view the technical data directly; otherwise, you can call them off through <http://data.rosler.com>

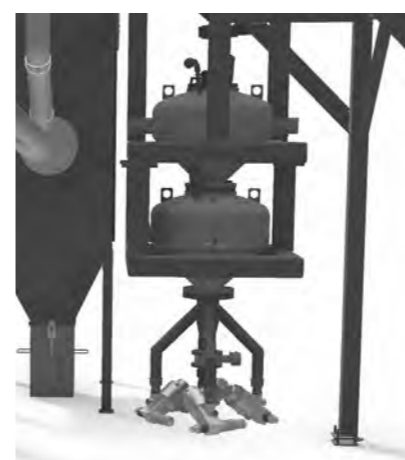


Swing table blast machine RWT



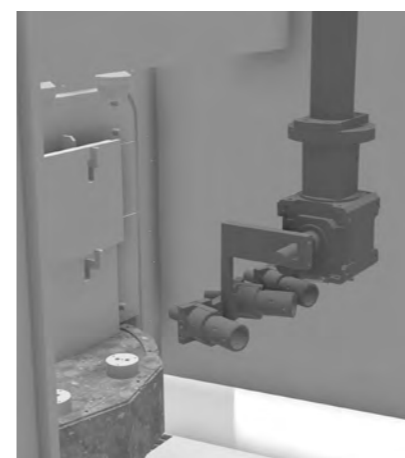
The Rösler swing table blast machine was developed for treating transmission components such as; for example, gears, crown wheels, bevel gears or shafts. The machine is divided into two zones, the externally located work piece loading / unloading zone and the blasting zone. A partition divides the rotating table into two 180° segments. Depending on the required throughput, this machine can be equipped with 2, 4 or 8 satellite stations. While the blast / peening process takes place in one segment, work pieces can be loaded / unloaded in the other segment. The transmission components can be loaded / unloaded by hand or fully automatically. Once the work pieces are placed into the satellites, the main table indexes by 180°. After the special sealing system is activated, the work pieces are clamped by a hold down device, and the blast / peening process

starts. At the same time, in the external zone, work pieces can be loaded / unloaded. The work pieces are rotated during the entire blast / peening cycle. Depending on the work piece dimensions, the blast nozzles are capable of being moved with a servo motor, allowing the tracing of the work piece contours and the targeting of specific surface areas.



Blast system

Swing table machines can be equipped with 8 (RWT 10), respectively with up to 16 blast nozzles (RWT 13). A dual vessel pressure blast system ensures that the blast cycle will not be interrupted. A special machine version allows the running of dual peening processes.



Blast chamber

The blast chamber is made from wear resistant manganese steel. The machine itself is equipped with a side door allowing easy access to the work area, for example, for adjustment of the blast nozzles or maintenance work. In addition, the blast chamber is protected by a noise absorbing, wear lining.



Rotation control

The treatment of transmission components requires sophisticated process controls to make sure that the specified blast results are achieved. For this purpose, the RWT blast machines are equipped with a hold down device with integrated rotation control of the satellite stations. The actual clamping takes place in the blast zone. The mechanical portion of the hold down device is located on the outside of the machine.

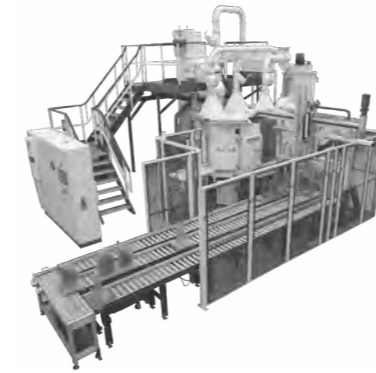


Rotary table blast machine RDT-S



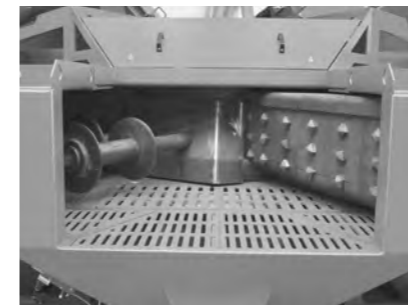
In this Rösler Model RDT-S rotary table blast machine, the table is divided into several sections separated from each other by partitions. On the edges of each of these partitions, permanent magnets are placed within, which attracts the metallic peening media to adhere - closing any gaps between the machine

housing and the partitions. This is a highly effective sealing system. The RDT-S is available with various satellite and turbine configurations.



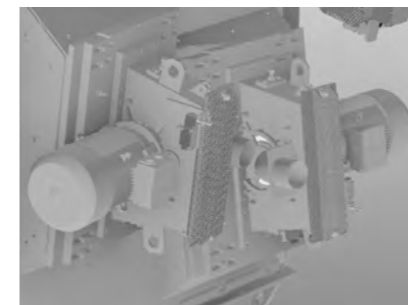
Automation

A step gear motor guarantees the precise movement and positioning of the table. With the placement of the satellite stations on the table also being very precise, automatic work piece loading / unloading with handling systems or robots can be easily implemented.



Magnetic seal

Instead of the usual rubber or labyrinth seals, the RDT machines contain a seal with an artificially generated layer of blast media. For this purpose, permanent magnets are built into the partitions. During the blast process, a blast media sealing barrier is generated around the magnets. After each blast cycle the media seal is wiped off.



Turbine placement

The placement of the blast turbines is flexible and depends on the respective peening application. The turbine position and angle is determined by the work piece shape and size. Furthermore, the design of the turbine casing allows any future modifications.

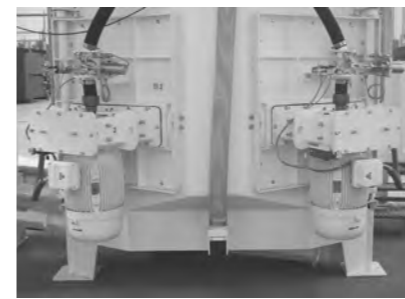


Satellite table blast machine RST



Rösler satellite table blast machines are specially designed for treating transmission components. This machine type is equipped with a main table containing a total of 15 satellite stations. In the front of the machine, the satellites are easily accessed for quick unloading of finished and the loading of raw work pieces. After the load / unload cycle, the machine always indexes by one satellite position. The blast zone and load / unload zones are separated from each other by lifting

gates and multiple rubber curtains. Two satellite stations are always positioned in front of the turbines. Depending on the work piece size and shape the turbines can be placed on the cabin sidewalls or roof for optimum blast coverage. During the blast cycle, the satellites rotate in front of the turbines. Prior to indexing to the load / unload station the satellites pass through a blow off station to remove any residual blast media from the work pieces.



Turbine placement

The turbine placement is always adapted to the respective work pieces and the customers blast specifications. A vertical, as well horizontal placement is possible. If needed, the turbines can even be placed on the cabin roof. For easy accessibility the turbines are mounted onto hinged doors. This also allows quick access to the blast chamber.



Ergonomic work piece loading / unloading

The design of the blast media collecting funnel and the media auger allows for manual work piece loading / unloading at an ergonomic height. Of course, automatic loading and unloading is also possible.



Maintenance

Several doors allow access to the blast area for quick and easy maintenance. When placed on the sidewall, the turbine(s) can be mounted to the maintenance door(s). This improves the accessibility to the blast area even further.



Swing chamber blast machine RWK



The Rösler Model RWK, swing chamber blast machine is truly an all-round system that can be used for many different peening applications. Since this machine type is designed as a dual chamber structure, it allows one set of work pieces to be loaded / unloaded, while another set is processed. For reliable

fixturing of the work pieces, RWK machines are equipped with a pneumatic and respectively, for stress peening of coil springs, with a hydraulic clamping device. The placement of the turbines on the back wall is flexible and depends entirely on the work pieces.

Continuous feed rotational peening machine RRDK



The Rösler Model RRDK, continuous feed rotational peening machine has been designed for peening suspension coil springs. On the loading side, the springs are placed between two rotating shafts. The distance between the shafts can be adjusted to the

spring diameter. An endless, moving chain is equipped with pusher pins, passing between the two rotating shafts. The springs are placed between two of these pins, which are literally pushing them through the machine.



Tumble belt blast machine RMBC



RMBC tumble belt machines are ideal for treating large quantities of work pieces that are not impact sensitive in batch mode. They are equally effective for the treatment of small, delicate plastic parts and large, heavy steel components. During the blast cycle the parts are constantly tumbling or gently cascading over each other ensuring effective, all-around blast coverage. The intensive contact between the work pieces accelerates the deburring process or the knocking out of core sand from castings.

Between one and up to three high performance turbines guarantee homogeneous blast results in very short cycle times. The endless belt made from perforated rubber or carbon steel, or respectively, manganese steel slats have

mixing strips to ensure an even presentation of the parts. The belt speed is adjustable for controlling the intensity of the tumbling / cascading action. RMBC machines can handle a wide spectrum of blast applications, be it shot peening, deburring or descaling of heat-treated components. Available in 5 different sizes, they can be equipped with high performance blast turbines or different air blast systems allowing the use of any blast media, whether metallic, mineral, plastic or prunus based.



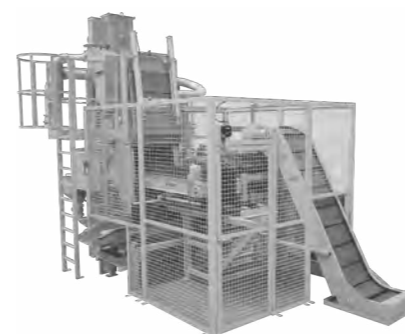
Blast chamber

- ▶ Internal wear lining made from manganese steel
- ▶ M-line seals protected against wear
- ▶ Manually operated cabin door secured by limit switch
- ▶ No exposed screw connections in the blast chamber



Air wash separator

- ▶ Large separator width with special flap controlling the media flow
- ▶ Large drop height of the cascade for more effective media classification
- ▶ Independent air damper
- ▶ Easy to clean safety screen drawer
- ▶ Large volume blast media storage hopper with fill level sensor



Automatic work piece loading / unloading

With custom engineered work piece loading & unloading concepts we increase the overall operational efficiency, minimise unproductive times and personnel costs. The integration of our tumble belt blast machines into existing manufacturing lines and implementation of fully automatic processing solutions is a key strength of our line of tumble belt machines. A wide range of equipment options allows easy adaptation to customer-specific requirements. For example, if gentle loading of delicate, large and heavy work pieces is required, the design focus must be on minimising any drop heights. For precise, weight-dependent and fully automatic work piece loading we have developed special weighing cells in combination with vibratory hoppers.

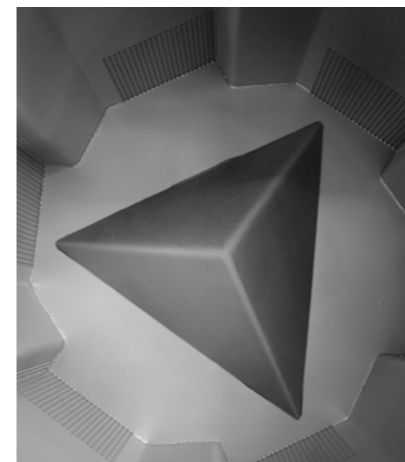


Multi-Tumbler RMT



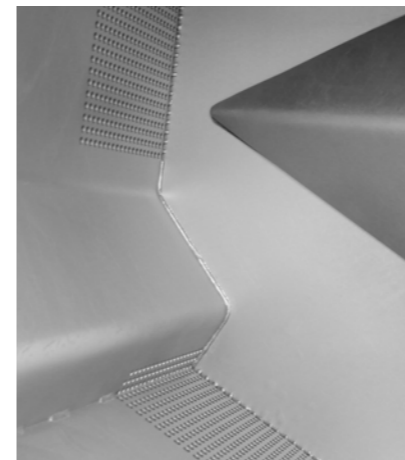
With regard to process component safety and batch integrity, multi-tumbler are unbeatable. During their development Rösler took into account many customer requirements and ideas. Whether the task is deburring, surface preparation (for example, roughening), blast cleaning or shot peening of parts that can tumble over each other, multi-tumbler systems offer unsurpassed performance. The new, optimised rotary drum has no pinch points whatsoever, thus preventing any damage to the work pieces. This allows safe batch integrity and optimal processing of extremely small and geometrically complex parts.

The dimensions of the work pieces that can be processed in RMT machines extend from a fraction of an inch to 24" (measured diagonally). The maximum piece weight amounts to about 100 kg (220 lbs.). With batch sizes from 80 liters (2.8 cuft) to 1,200 liters (43 cuft) the comprehensive machine program can handle a wide range of different shot blasting tasks. Homogeneous surface finishes and short cycle times are typical for any multi-tumbler application.



Specially designed rotary drum

Key to the excellent performance characteristics of the RMT blast machines is the geometry of the rotary drum. The inside wall of the drum is equipped with specially shaped mixing cams, while the bottom of the drum contains a three-sided pyramid. This unique geometry creates the innovative "multi-tumbler" effect. During rotation the cams cause a general mixing of the work pieces. At the same time, the pyramid in the drum bottom facilitates the mixing of the upper and lower work piece layers. With this "multi-tumbler" effect all work piece surface areas are equally and reliably exposed to the stream of blast media.



Special perforation / treatment of very small work pieces

Depending on the shape and size of the work pieces and the blast media, the drum can be equipped with specially perforated screens. This prevents lodging of the work pieces in the drum and, thus, guarantees absolute batch integrity. Even the smallest parts can be safely processed in the RMT.



Ingenious work piece loading & unloading

In order to match the multi-tumbler systems with the customer manufacturing environment, Rösler offers specially developed lift & tip loading systems, movable hoppers, weighing cells and various work piece transport systems. The design of all loading and unloading units reflects the technical characteristics of the RMT concept. Batches of up to 4,000 kg (8,800 lbs.) can be easily handled. And, of course, all our material handling components can be adapted to the dimensions of the customer work piece bins.



Auxiliary equipment



MagnaValves – Creation of an electromagnetic field for dosing the blast media

When it comes to dosing of the exact blast media quantity to the turbines and for media replenishment, MagnaValves guarantee maximum process safety and precision. This system is based on a permanent magnet and an electromagnet. During the blast cycle the magnetic field of the permanent magnet is neutralized by sending current through the electromagnet allowing the media to flow. When no current is applied, the media flow is stopped. Since MagnaValves utilize no moving parts, they require little maintenance and sustain practically no wear. Versions equipped with a coil sensor allow the exact measurement of the media flow.



Spiral separators

When steel shot is used, not only the shot size but also the shape must be controlled. The shot peening process is only effective with spherical media. Because of its brittleness steel media tends to break down causing it to become angular. This broken down media must be discharged with a spiral separator. The media is fed into the spiral separator at the top. Because of the centrifugal force and gravity, the “good” (round) media rolls down through the spirals, whereas broken down, angular media drops through the centre of the separator and is discharged. The relatively small capacity of spiral separators only allows their operation in by-pass mode.



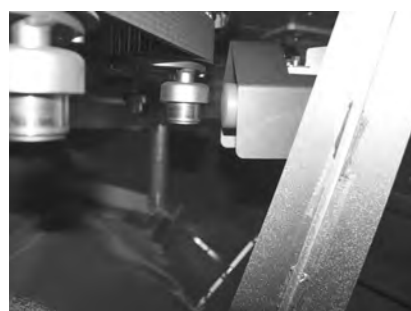
Screening / classification systems

In order to ensure the repeatability of the peening process, the blast media may have to be screened to ensure an even grain size distribution in the media operating mix. Frequently, such screening requirements are part of the shot peening specifications. Depending on the technical requirements, with pressure blasting applications the complete media quantity can be classified with a screening unit, or in the case of lesser demands, a smaller quantity can be classified in by-pass mode. Because of the high media quantities thrown, turbine blast processes only allow screening of the media in by-pass mode.



Control of the media hose

Wear, especially in the media hose, can negatively affect the blasting results. To prevent this problem, a special media hose control is implemented. The actual media hose is placed within a second hose equipped with a pressure controller. If a leak in the media hose should occur, an alarm sounds, and the blasting process is stopped.



Rotation control

Frequently, work pieces rotate during the blast process. For such applications rotation controls are required to ensure stable, repeatable blast results. Whenever possible the rotation is not checked on the actual drives but at the work piece itself.

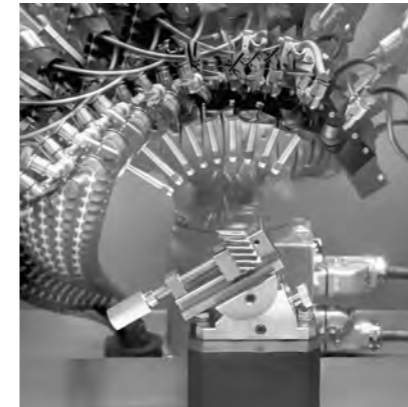


Visualisation

For many shot peening processes, a clear and user-friendly display of all process phases is essential. Besides a basic visualization, Rösler also offers extended visualisation modules displaying additional information about the process. For more complex shot peening systems handheld operator panels are available.



Rösler technical support (overview)



Development phase:

- ▶ Determination of the process parameters in our test lab
- ▶ Compressive stress measurements including preparation of the work piece samples
- ▶ Careful documentation of all trials and measurements
- ▶ Determination of the equipment parameters based on the results of the peening trials, including preparation of a quote

Order processing phase:

- ▶ Compressive stress measurements prior to and during the pre-commissioning phase before delivery of the equipment

After delivery and final commissioning:

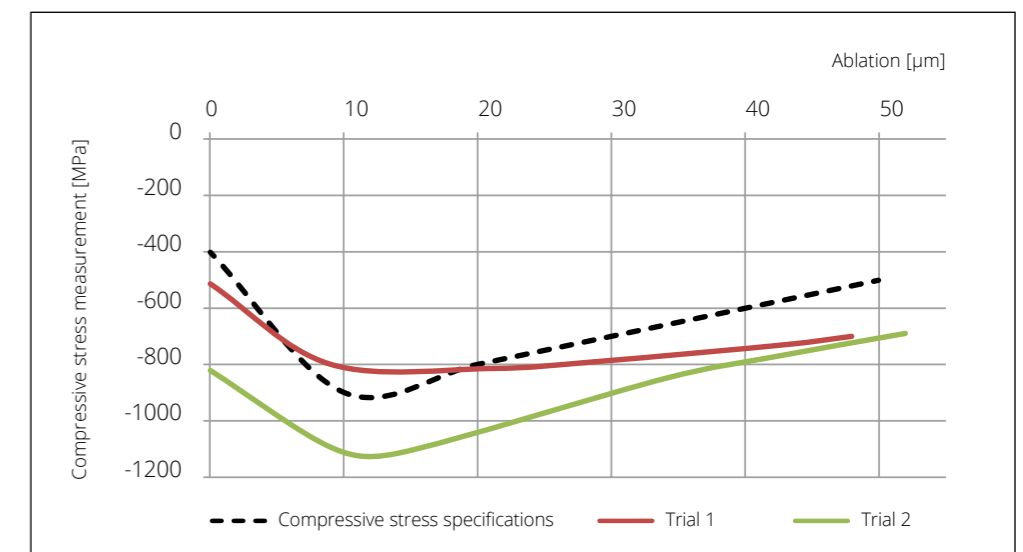
- ▶ Compressive stress measurements for control of the peening results after production startup
- ▶ Auxiliary measurements on Rösler as well as non-Rösler equipment during production

Our process development approach:

You provide us with the required compressive stress parameters. For example, your work pieces are currently treated at a job shop. The detailed process parameters are not known. In future you want to bring this particular process in-house. This requires running peening trials with different parameters and blast media sizes. Conducting these trials, compressive stress measurements, process optimisation and specifying the required equipment, all these steps can take place at Rösler.

When it comes to developing new, innovative shot blast methods, Rösler is a true technological trendsetter. We offer our customers not only state-of-the-art products and services but also comprehensive application knowhow that allows us to tackle the most complex shot blasting tasks. Our focus is on user oriented technical solutions securing top quality and cost efficiency for our customers, thus providing them with significant competitive advantages. Especially with shot peening applications, detailed knowledge of all process parameters is essential. Our in-house X-ray diffraction lab allows us to quickly measure compressive stresses, an extremely important aspect in the development of any shot peening solution.

Thanks to an integrated robot our ultra-modern X-ray diffractometer permits the most complex measurements. With a specially developed electro-polishing method we can precisely measure material ablation in the work piece samples, which is essential to determine compressive stress curves in the upper surface layers of the samples. This investment enabled us to make measurements conforming to the standards ASTM E915 and EN 15305. And, with a specially developed software module we can analyse measurements in accordance with VW PV 1005 and Getrag GFT 4010. Please contact us for any further questions or requests.



Example: Compressive stress curve

State-07/2016



RetroFit - modernisation of existing shot blast machines



Higher productivity and cost efficiency – these are hot subjects in the field of surface treatment. To remain competitive, the owners of older shot blast machines must update their shot blast systems to bring them up to modern technical standards. Our “TuneUp” division is specialised in the technical modernisation of shot blast machinery of all makes. As market leader we can offer a wide portfolio of blast turbines and upgrade solutions

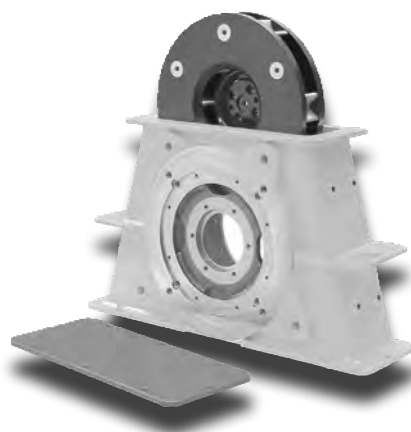
for practically every conceivable application. This means not only exploiting cost saving possibilities by utilising energy efficient and low maintenance components, but also the cost effective adaptation of existing shot blast machines to changed operational requirements such as, for example, improved blasting results or higher work piece throughput.

Technical possibilities – blast turbines

Rösler possesses the technical knowhow and system components to optimise your shot blast equipment. This includes the ingenious “RUTTEN-Gamma” and “Gamma G” high performance turbines.

Take advantage of the benefits of our equipment modernisation program:

- ▶ Lower maintenance costs
- ▶ Lower cycle times
- ▶ Lower energy consumption
- ▶ Lower blast media consumption



After-Sales-Service



Round the clock technical support - for the entire life of the machine!

Whatever problems or questions you may have, we will provide you with expert support in practically any area:

- ▶ Conducting of BUS measurements
- ▶ Technical support for all kinds of processing issues
- ▶ Test centers and laboratories all over the world
- ▶ Blast media analysis
- ▶ 24 hour hot line - round the clock problem solving support
- ▶ Spare and wear parts, also for equipment not supplied by Rösler
- ▶ Customised maintenance agreements
- ▶ Training of operating and maintenance personnel
- ▶ Modernisation and relocation of existing equipment
- ▶ Support in fulfilling all relevant legal requirements
- ▶ Control and calibration of dust collectors
- ▶ Conducting tests for ground wires
- ▶ Regulations for accident prevention

Maintenance and repair service

Our qualified service team stands ready to serve you in case of an emergency, as well as for scheduled repairs or maintenance work. With short reaction times and well-equipped service vehicles we can quickly repair your machine or perform maintenance work on site.



Spare and wear parts – also for non-Rösler equipment

All shot blast machines are exposed to a certain amount of wear. Rösler maintains a large part inventory to guarantee a high availability combined with a quick delivery. If necessary we also deliver over night.





Germany

Rösler Oberflächentechnik GmbH
Werk Memmelsdorf
Vorstadt 1
D-96190 Untermmerzbach
Tel.: +49 9533 / 924-0
Fax: +49 9533 / 924-300
info@rosler.com

Rösler Oberflächentechnik GmbH
Werk Hausen
Hausen 1
D-96231 Bad Staffelstein
Tel.: +49 9533 / 924-0
Fax: +49 9533 / 924-300
info@rosler.com

USA

Rösler Metal Finishing USA, L.L.C.
1551 Denso Road
USA-Battle Creek
MI 49037
Tel.: +1 269 / 4413000
Fax: +1 269 / 4413001
rosler-us@rosler.com

France

Rösler France
Z.I. de la Fontaine d'Azon
CS 50513 - St. Clément
F-89105 Sens Cedex
Tel.: +33 3 / 86647979
Fax: +33 3 / 86655194
rosler-fr@rosler.com

Italy

Rösler Italiana S.r.l.
Via Elio Vittorini 10/12
I-20863 Concorezzo (MB)
Tel.: +39 039 / 611521
Fax: +39 039 / 6115232
rosler-it@rosler.com

Switzerland

Rösler Schweiz AG
Staffelbachstraße 189
Postfach 81
CH-5054 Kirchleerau
Tel.: +41 62 / 7385500
Fax: +41 62 / 7385580
rosler-ch@rosler.com

Spain

Rösler International GmbH & Co. KG
Sucursal en España
Polig. Ind. Cova Solera C/Roma, 7
E-08191 Rubí (Barcelona)
Tel.: +34 93 / 5885585
Fax: +34 93 / 5883209
rosler-es@rosler.com

Netherlands

Rösler Benelux B.V.
Reggestraat 18
NL-5347 JG Oss
Postbus 829
NL-5340 AV Oss
Tel.: +31 412 / 646600
Fax: +31 412 / 646046
rosler-nl@rosler.com

Belgium

Rösler Benelux B.V.
Avenue de Ramelot 6
Zoning Industriel
B-1480 Tubize (Saintes)
Tel.: +32 2 / 3610200
Fax: +32 2 / 3612831
rosler-be@rosler.com

Austria

Rösler Oberflächentechnik GmbH
Hetmanekgasse 15
A-1230 Wien
Tel.: +43 1 / 6985180-0
Fax: +43 1 / 6985182
rosler-at@rosler.com

Romania

Rösler Romania SRL
Str. Avram Iancu 39-43
RO-075100 Otopeni/ILFOV
Tel.: +40 21 / 352 4416
Fax: +40 21 / 352 4935
rosler-ro@rosler.com

Serbia

Rösler D.o.o
Dr Ivana Ribara 32
SRB-11070 Novi Beograd
Tel.: +381 11 / 3184407
rosler-rs@rosler.com

Great Britain

Rösler UK
Unity Grove, School Lane
Knowsley Business Park
GB-Prescot, Merseyside L34 9GT
Tel.: +44 151 / 4820444
Fax: +44 151 / 4824400
rosler-uk@rosler.com

Russia

Rösler Russland
Borovaya Str. 7, bldg. 4, office 107
111020 Moscow
Tel. / Fax: +7 495 / 247 55 80
rosler-ru@rosler.com

Brazil

Rösler Otec do Brasil LTDA.
Av. Antonio Angelo Amadio, 1421
Centro Empresarial Castelo Branco
18550-000 Boituva
São Paulo - Brasil
Tel.: +55 11 / 46123844
Fax: +55 11 / 46123845
info@rosler-otec.com.br

China

Rösler SURFACE-TECH (BEIJING) CO., LTD.
Beijing Office
Fu Hua Mansion, Office A-11-K
No. 8, Chao Yang Men North Avenue
Beijing 100027, P.R.China
Tel.: +86 10 / 6554 73 86
Fax: +86 10 / 6554 73 87
rosler-cn@rosler.com

India

Rösler SurfaceTech Pvt. Ltd.
Pune Factory No: A-29, Chakan MIDC-Phase 2
Pune-410501
Tel.: +91 2135 / 690202
Bangalore Office No: 9, Main Road, RT Nagar
Bangalore-560032
Tel.: +91 80 / 23534445
Fax: +91 80 / 23339165
info@rosler.net.in

▶ and more than 150 representations worldwide

